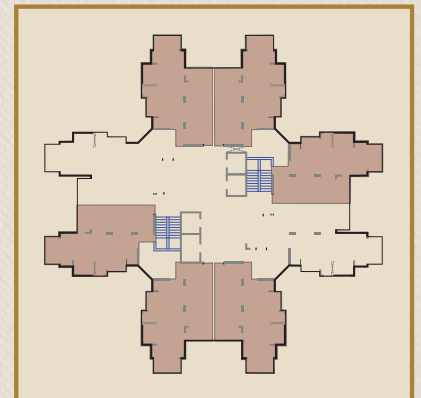


Type - 1

Saleable area - 1060 Sq. Ft.



2 Bedroom + Living Room & Dining + Kitchen + 2 Toilet +
3 Balcony + Utility Balcony



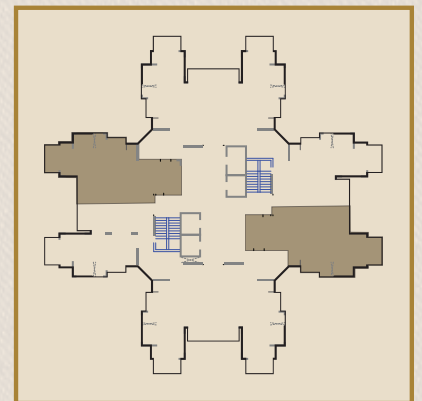
Disclaimer : While every attempt has been made to ensure the accuracy of the plans shown, all measurements, positioning, fixtures, fittings and any other data shown are an approximate interpretation for illustrative purposes only and are not to scale. No responsibility is taken for any error, omission, miss-statement or use of data shown. The company reserves the right to make changes in the plans, specifications, dimensions and elevations without any prior notice. 1 sq. ft. = 0.0929 sq. mt., 1 sq. mt. = 10.764 sq. ft, 1 ft. = 0.305 mt and 1 mt = 3.281 ft.

Type - 2

Saleable area - 1250 Sq. Ft.



2 Bedroom + Living Room & Dining + Kitchen+ 2 Toilet +
Study +3 Balcony + Utility Balcony



Disclaimer : While every attempt has been made to ensure the accuracy of the plans shown, all measurements, positioning, fixtures, fittings and any other data shown are an approximate interpretation for illustrative purposes only and are not to scale. No responsibility is taken for any error, omission, miss-statement or use of data shown. The company reserves the right to make changes in the plans, specifications, dimensions and elevations without any prior notice. 1 sq. ft. = 0.0929 sq. mt., 1 sq. mt. = 10.764 sq. ft, 1 ft. = 0.305 mt and 1 mt = 3.281 ft.

Type - 3

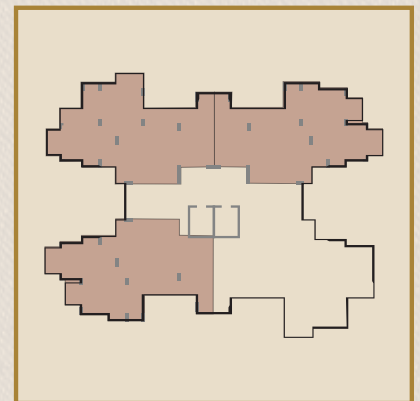
Saleable area - 1635 Sq. Ft.

CAPITAL ATHENA

2/3/4 BHK PREMIUM APARTMENTS
G. NOIDA (WEST)



3 Bedroom + Living Room & Dining + Kitchen + 3 Toilet +
3 Balcony + Utility Balcony



Disclaimer : While every attempt has been made to ensure the accuracy of the plans shown, all measurements, positioning, fixtures, fittings and any other data shown are an approximate interpretation for illustrative purposes only and are not to scale. No responsibility is taken for any error, omission, miss-statement or use of data shown. The company reserves the right to make changes in the plans, specifications, dimensions and elevations without any prior notice. 1 sq. ft. = 0.0929 sq. mt., 1 sq. mt. = 10.764 sq. ft, 1 ft. = 0.305 mt and 1 mt = 3.281 ft.

Type - 4

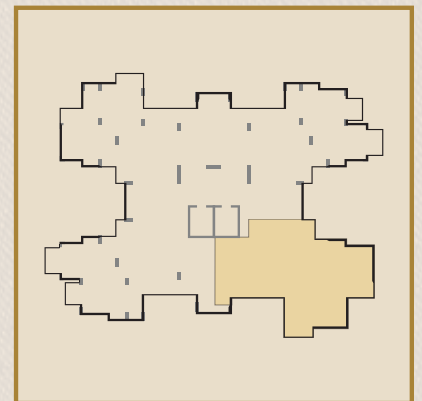
Saleable area - 1795 Sq. Ft.

CAPITAL ATHENA

2/3/4 BHK PREMIUM APARTMENTS
G. NOIDA (WEST)



3 Bedroom + Living Room & Dining + Kitchen + 3 Toilet +
3 Balcony + Utility Balcony



Disclaimer : While every attempt has been made to ensure the accuracy of the plans shown, all measurements, positioning, fixtures, fittings and any other data shown are an approximate interpretation for illustrative purposes only and are not to scale. No responsibility is taken for any error, omission, miss-statement or use of data shown. The company reserves the right to make changes in the plans, specifications, dimensions and elevations without any prior notice. 1 sq. ft. = 0.0929 sq. mt., 1 sq. mt. = 10.764 sq. ft, 1 ft. = 0.305 mt and 1 mt = 3.281 ft.

Type - 5

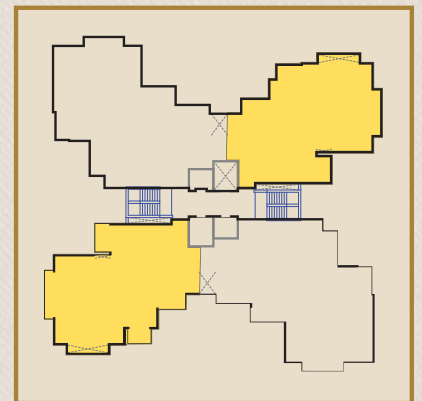
Saleable area - 2095 Sq. Ft.

CAPITAL ATHENA

2/3/4 BHK PREMIUM APARTMENTS
G. NOIDA (WEST)



3 Bedroom + Living Room & Dining + Kitchen + 3 Toilet + 3 Balcony +
Utility Balcony + Servant Room with Toilet



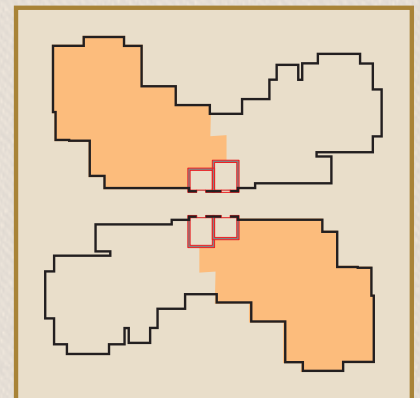
Disclaimer : While every attempt has been made to ensure the accuracy of the plans shown, all measurements, positioning, fixtures, fittings and any other data shown are an approximate interpretation for illustrative purposes only and are not to scale. No responsibility is taken for any error, omission, miss-statement or use of data shown. The company reserves the right to make changes in the plans, specifications, dimensions and elevations without any prior notice. 1 sq. ft. = 0.0929 sq. mt., 1 sq. mt. = 10.764 sq. ft, 1 ft. = 0.305 mt and 1 mt = 3.281 ft.

Type - 6

Saleable area - 2600 Sq. Ft.



4 Bedroom + Living Room & Dining + Kitchen + 4 Toilet + 4 Balcony +
Utility Balcony + Servant Room with Toilet



Disclaimer : While every attempt has been made to ensure the accuracy of the plans shown, all measurements, positioning, fixtures, fittings and any other data shown are an approximate interpretation for illustrative purposes only and are not to scale. No responsibility is taken for any error, omission, miss-statement or use of data shown. The company reserves the right to make changes in the plans, specifications, dimensions and elevations without any prior notice. 1 sq. ft. = 0.0929 sq. mt., 1 sq. mt. = 10.764 sq. ft, 1 ft. = 0.305 mt and 1 mt = 3.281 ft.